

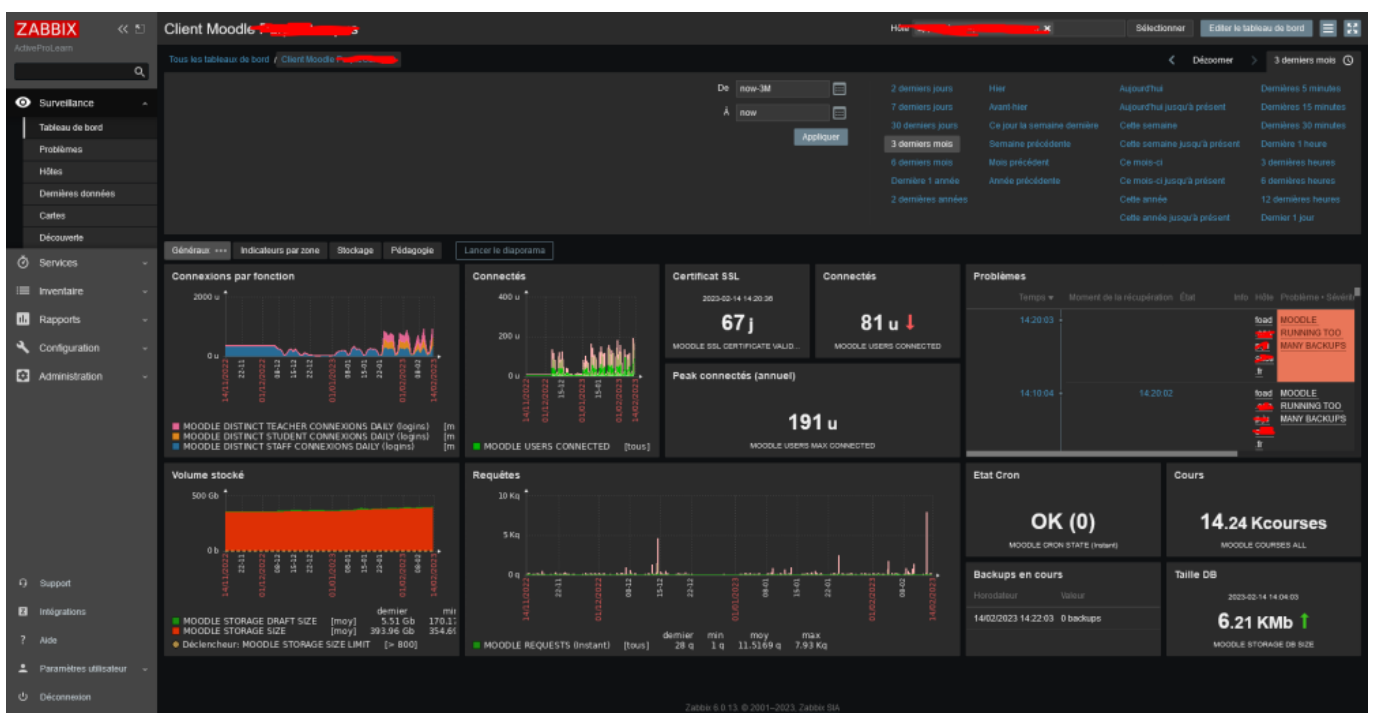


## Rendering samples

# Zabbix Report

These renderings are obtained from Zabbix Dashboards build on basis of the collected indicators. Provided models provide standard dashboards attached to the model file.

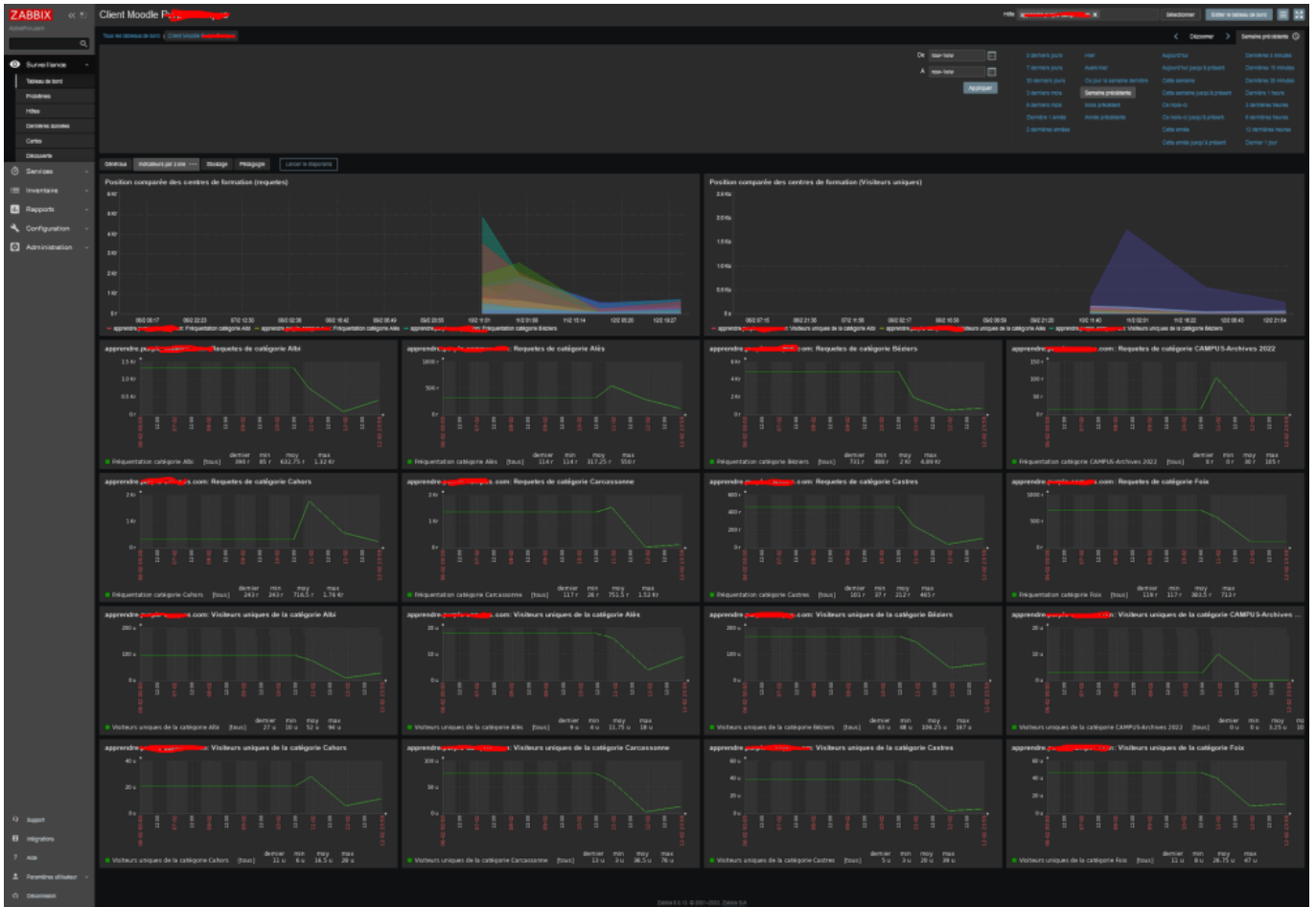
## General indicators



## Targeted indicators by Course Category

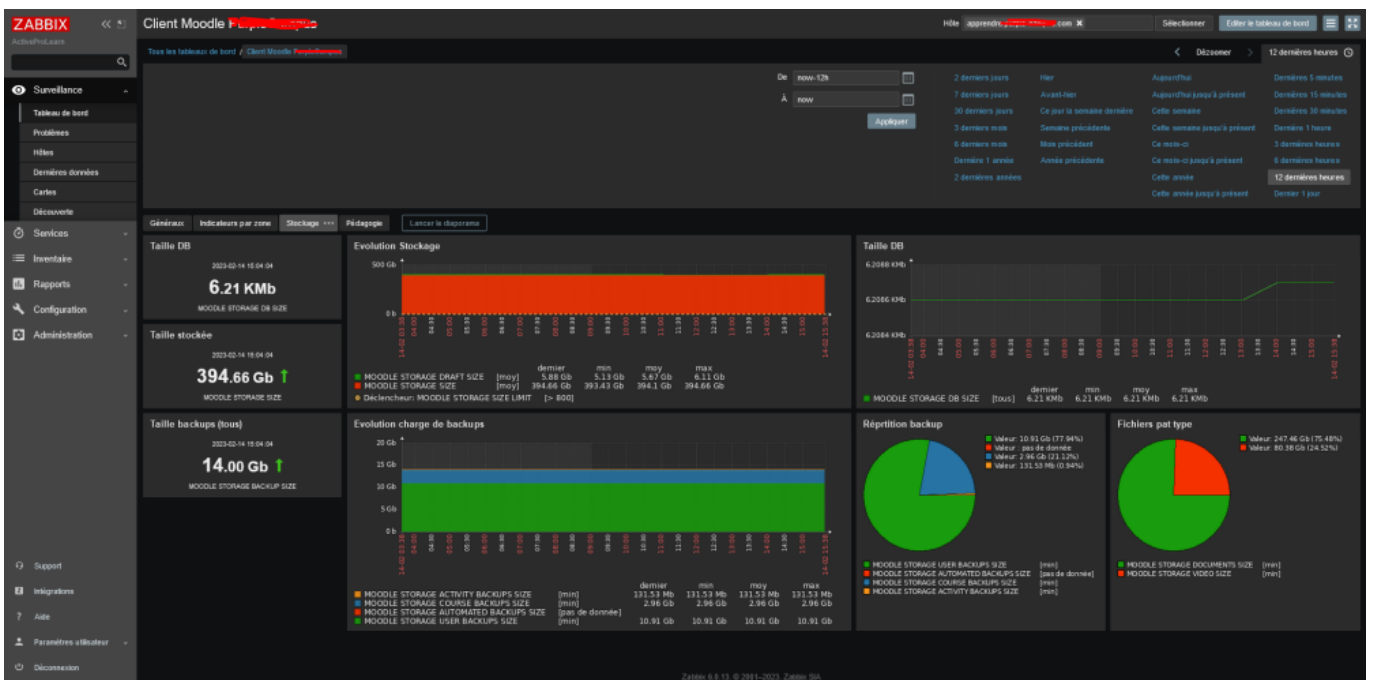
This screenshot illustrates the Pro feature using the Discovery methods of Zabbix. Zabbix will dynamically discover the categories (in a configured scope and deepness) and will update the widget prototypes accordingly.

You will need the Pro extension and a registered License Key to activate this capability.



## Dimensioning indicators (storage)

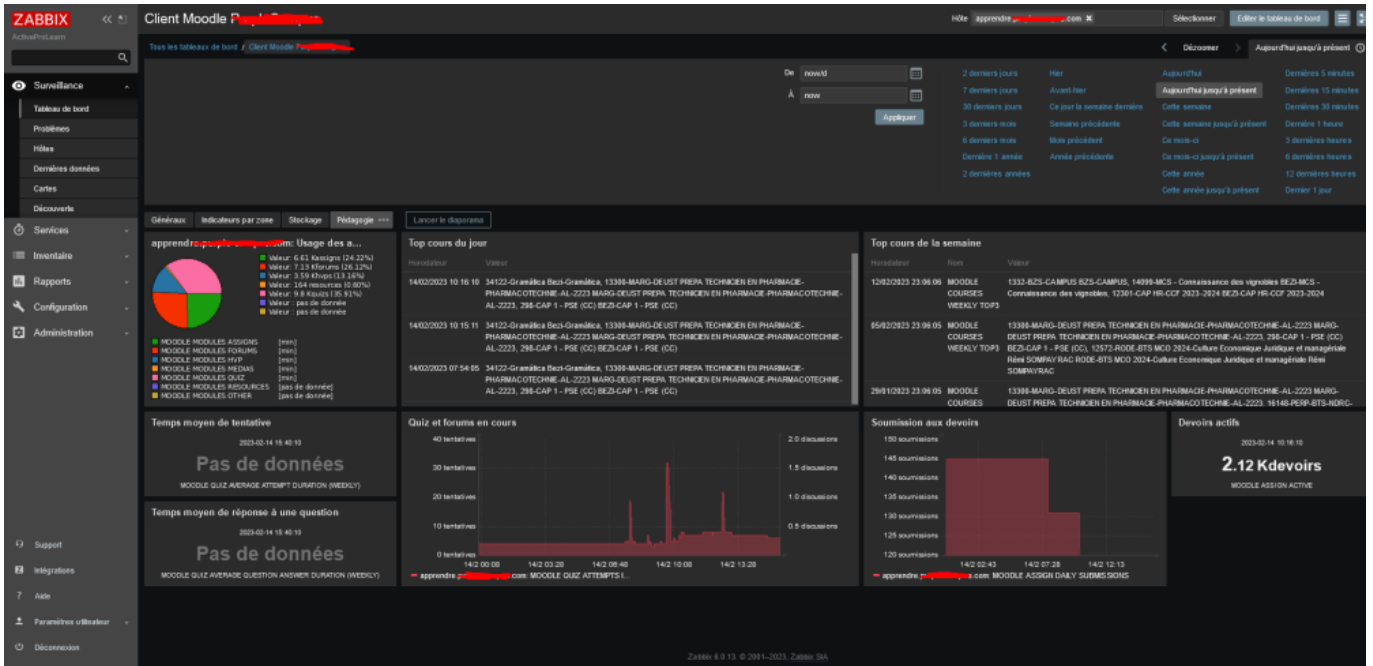
This dashboard illustrates how to monitor major dimensioning indicators, such as DB size and storage size.



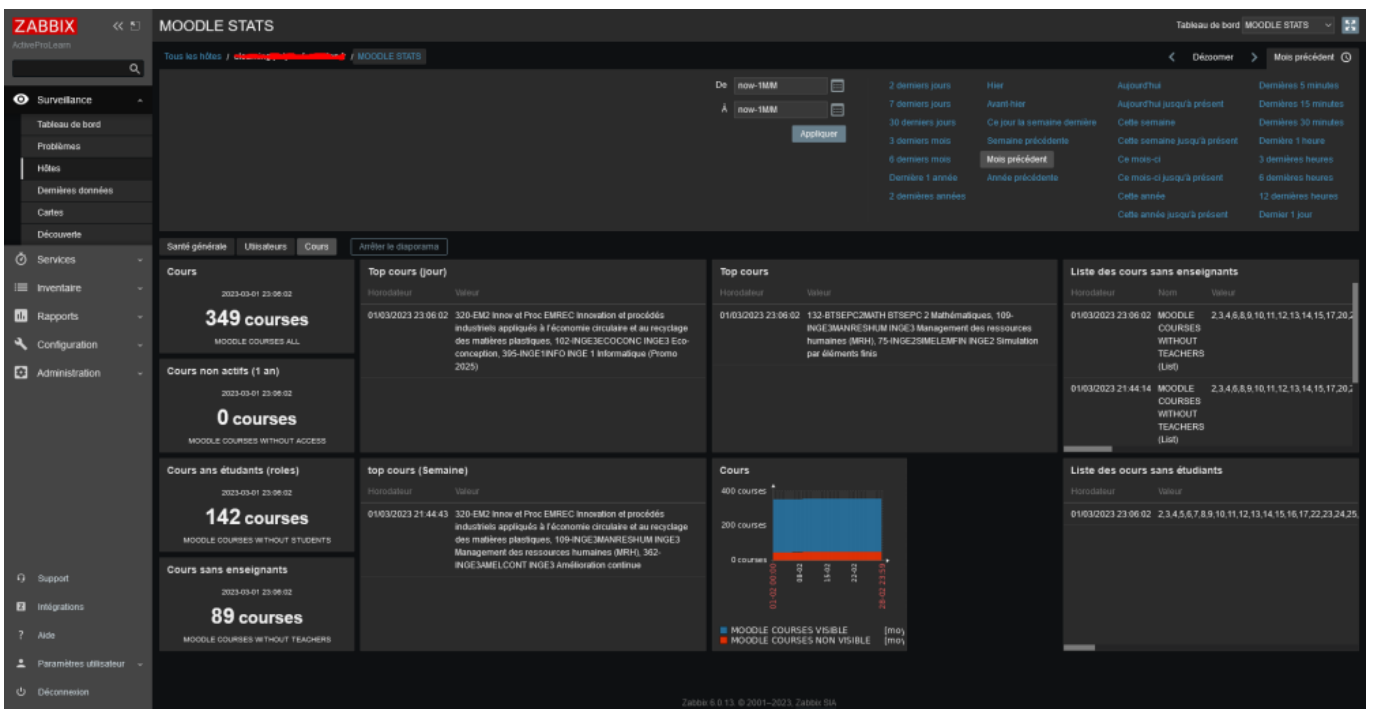
# Pedagogical indicators

As Zabbix Sender report plugin has far more than technical purpose, it can send a lot of data allowing accurate and rich pedagogic monitoring.

the additional "Pro" feature (needs a License Key) will allow Moodle Administrators to define new indicators on the fly, without coding, based on SQL queries on the moodle database model.



# Course indicators



[Back to Zabbix Report index](#) - [Back to plugin index](#) - [Back to catalog](#)

From:  
<https://docsen.activeprolearn.com/> - **Documentation Moodle ActiveProLearn**

Permanent link:  
<https://docsen.activeprolearn.com/doku.php?id=report:zabbix:screenshots&rev=1770133344>

Last update: **2026/02/03 15:42**

